

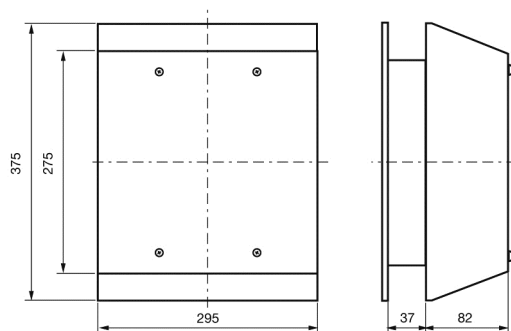
"T19" SERIES

Description: **Roof Exhaust Unit**

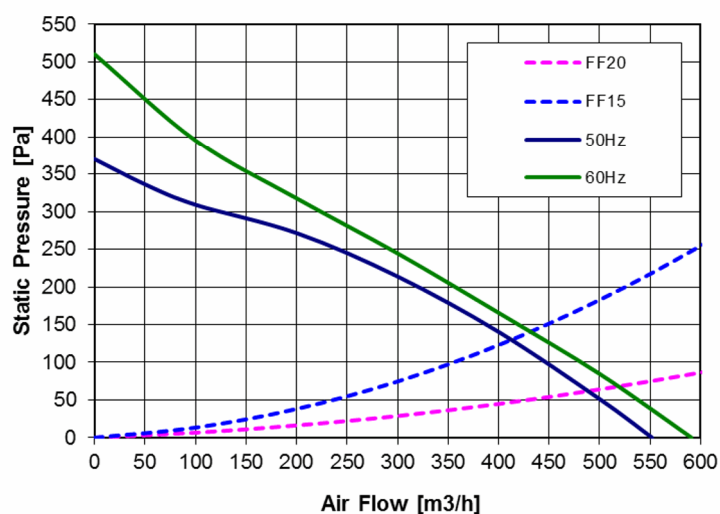
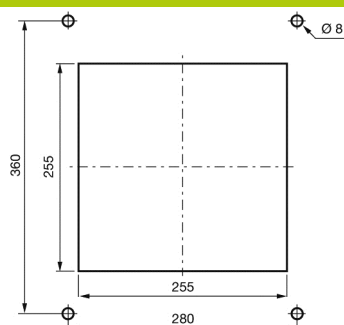


Type of material:	epoxy painted steel casing
Standard colour:	RAL 7032 and RAL 7035
Protection degree:	IP23, according to EN 60529 standard
Fixing method:	By No 4 M6 screws
Plate thickness:	any
Storage temperature:	from -20°C to +60°C
Lifetime L10 at 40°C:	50,000 h
Motor protection:	thermal
Electrical connection:	by 3 core 1.0 mm ² cable
Earth connection:	by yellow/green conductor
Appliance class:	class I
Weight:	5.29 Kg
Approvals:	CE

Technical drawing



Mounting cut-out



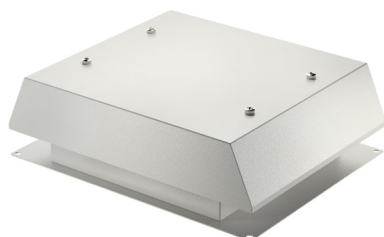
Model	Voltage	Frequency	Rated Current	Rated Power	Max Air Flow**	Static Pressure	Noise	Rated Temp. Range	Approvals
	(V)	(Hz)	(A)	(W)	(m3/h)	(Pa)	[db(A)]	(°C)	
T19*115B	115 V a.c.	50/60	0.53/0.62	58/71	550/590	370/510	67.9/71.0	-20 ÷ +60	CE
T19*230B	230 V a.c.	50/60	0.290/0.340	62/78	550/590	370/510	67.9/71.0	-20 ÷ +60	CE

(*) may be R for color RAL 7032 or U for color RAL 7035

(**) data with uncertainty of 10%

T22R230B

standard with fan



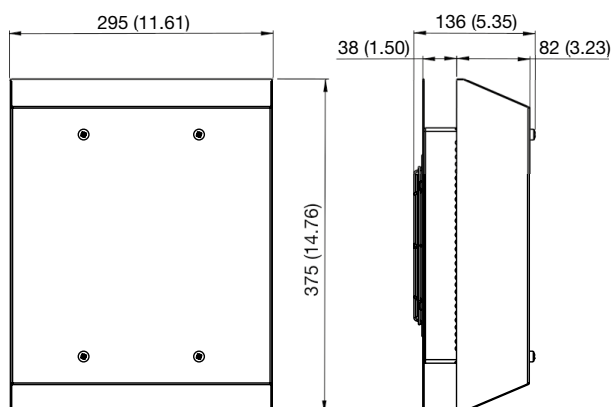
T series roof exhaust units represents an optimal solution for heat dissipation through the top of electrical cabinets. They are ideal for indoor use where there is limited space on the front and side panels. According to the ambient conditions these units can operated with fan (forced air) or without a fan (natural air convection).

Technical data		
APPROVALS		
Approvals	CE	
PERFORMANCE		
Max Airflow	800/850	m³/h
	471/500	CFM
Airflow with Exhaust Filter	660/700	m³/h
	388/412	CFM
Max Static Pressure	435/548	Pa
	1.75/2.20	in H2O
ELECTRICAL DATA		
Rated Voltage	230	V a.c.
Rated Current	0.56/0.7	A
Rated Power	125/161	W
Operating Voltage	207-253	V a.c.
Frequency	50/60	Hz
Appliance Class	I	
Motor Protection	Thermally Protected	
GENERIC DATA		
RAL Number	7032	
Electrical Connection	Wires	
Life Expectancy	65000/62500	h at 40 °C
	65000/62500	h at 104 °F

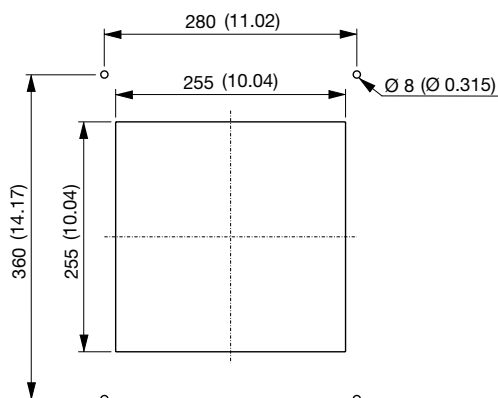
T19R230B

standard with fan

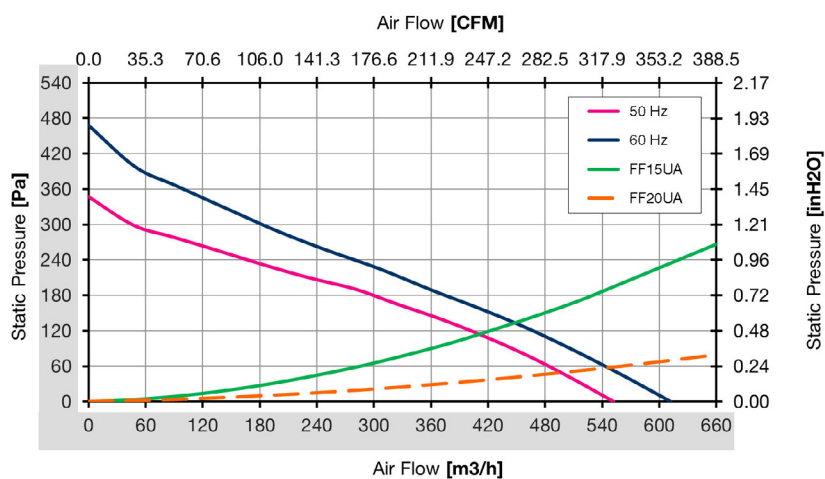
Technical drawing mm (in)



Mounting cut-out mm (in)



Air performance



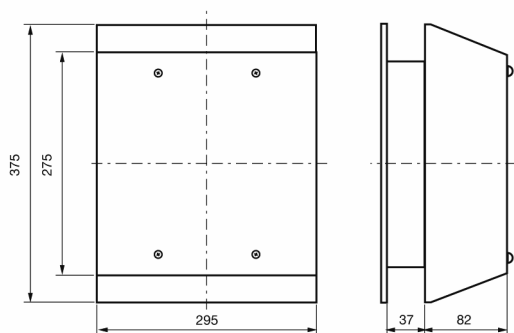
"T22" SERIES

Description: **Roof Exhaust Unit**

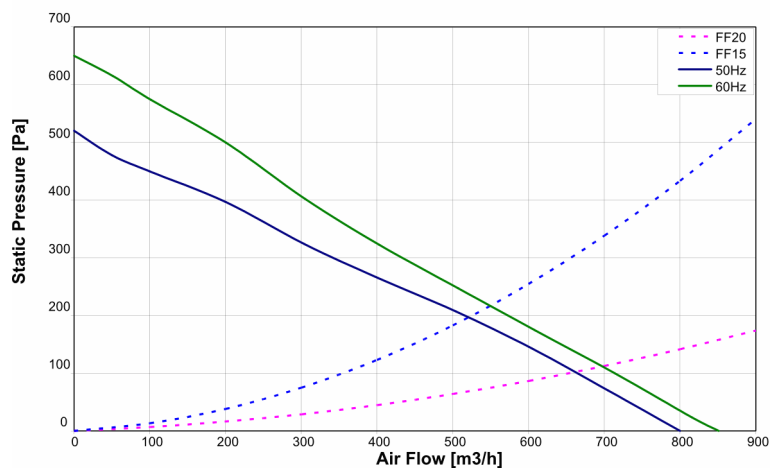
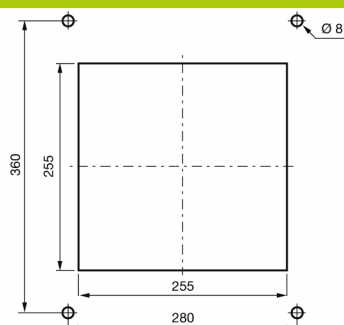


Type of material:	epoxy painted steel casing
Standard colour:	RAL 7032 and RAL 7035
Protection degree:	IP23, according to EN 60529 standard
Fixing method:	By No 4 M6 screws
Plate thickness:	every
Storage temperature:	from -20°C to +70°C
Lifetime L10 at 40°C:	50,000 h
Motor protection:	thermal
Electrical connection:	by 3 core 1.0 mm ² cable (blue, brown, and y/g)
Earth connection:	by yellow/green conductor
Appliance class:	class I
Weight:	6.27 Kg

Technical drawing



Mounting cut-out



Model	Voltage	Frequency	Rated Current	Rated Power	Max Air Flow**	Static Pressure	Fan Noise	Rated Temp. Range	Approvals
	(V)	(Hz)	(A)	(W)	(m3/h)	(Pa)	[db(A)]	(°C)	
T22U115B	115 V a.c.	50/60	1.10/1.50	130/170	800/850	520/650	74.0/75.6	-20 ÷ +60	CE
T22U230B	230 V a.c.	50/60	0.56/0.70	125/161	800/850	520/650	75.2/76.7	-20 ÷ +60	CE

(*) data with uncertainty of 10%