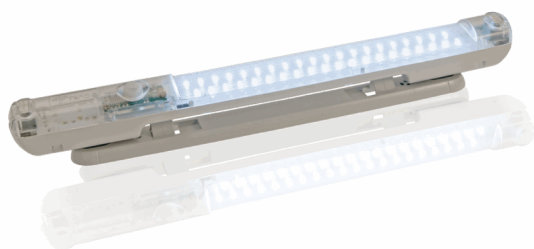
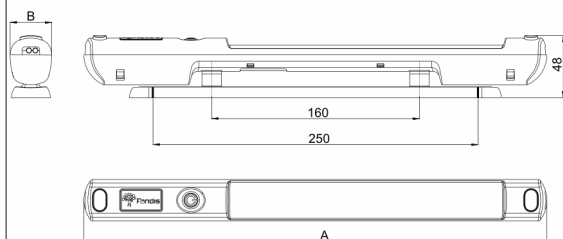


**"FLL" LED LAMP**Description: **LED Lamp**

<b>Housing material:</b>	PC Plastic UL94 V0
<b>Type of cover:</b>	transparent
<b>Appliance class:</b>	class II
<b>Electrical connection:</b>	2-poles cage clamp terminal for wire range 20~14AWG (0.5mm <sup>2</sup> ~1.5mm <sup>2</sup> )
<b>Operating voltage range:</b>	85-132Va.c.(FLL-120 series);173-265Va.c.(FLL-230 series);85-265Va.c.(FLL-300 series)
<b>Storage temperature:</b>	from -40°C to +85°C
<b>Operating temperature:</b>	from -30°C to +60°C
<b>Protection degree:</b>	IP20
<b>Life:</b>	160,000 h at 25 °C
<b>Switch:</b>	manual ON/OFF or PIR sensor
<b>Angle of radiation PIR:</b>	120°
<b>Auto switch off:</b>	300 s (only PIR version)
<b>Installation:</b>	2 x M5 screws or magnet pots fastening
<b>Certifications:</b>	CE; UL E237844 (UL 508 and CSA C22.2 No. 14)

**Drawing**

Model	Rated Voltage	Frequency	Watt	Dimensions (mm)		No. of Led	Color Temp.	Lum. Flux	Weight
	(V)	(Hz)	(W)	A	B		K	lm	(kg)
FLL-120565U-IR	115 V a.c.	50/60	5.0	356	32	40	7,100	315	0,170
FLL-120565U-IRM	115 V a.c.	50/60	5.0	356	32	40	7,100	315	0,180
FLL-120565U-S	115 V a.c.	50/60	5.0	356	32	40	7,100	315	0,170
FLL-120565U-SM	115 V a.c.	50/60	5.0	356	32	40	7,100	315	0,180
FLL-230565U-IR	230 V a.c.	50/60	5.0	356	32	40	7,100	315	0,170
FLL-230565U-IRM	230 V a.c.	50/60	5.0	356	32	40	7,100	315	0,180
FLL-230565U-S	230 V a.c.	50/60	5.0	356	32	40	7,100	315	0,170
FLL-230565U-SM	230 V a.c.	50/60	5.0	356	32	40	7,100	315	0,180
FLL-300565U-IR	115-230V a.c.	50/60	5.0	356	32	40	7,100	315	0,170
FLL-300565U-IRM	115-230V a.c.	50/60	5.0	356	32	40	7,100	315	0,180
FLL-300565U-S	115-230V a.c.	50/60	5.0	356	32	40	7,100	315	0,170
FLL-300565U-SM	115-230V a.c.	50/60	5.0	356	32	40	7,100	315	0,180

IR = PIR Sensor, S = ON/OFF Switch, M = Magnet fixing