

# ITR

## Electronic digital fan speed controller



The electronic speed controllers of the ITR9 series control the speed of single-phase (110–240 VAC - 50 / 60 Hz) voltage controllable motors by varying the supplied voltage. The ITR controllers provide automatic power supply detection. The minimum and maximum speed are internally adjusted by trimmers. The output is regulated by a potentiometer in the range of the minimum output voltage to the supply voltage. The ITR controller provides an unregulated output for a three-wire motor connection, valve, lamp, damper, etc. There are two start-up modes - kick start and soft start, internally selectable by placing or removing a jumper on the PCB.

### Key features

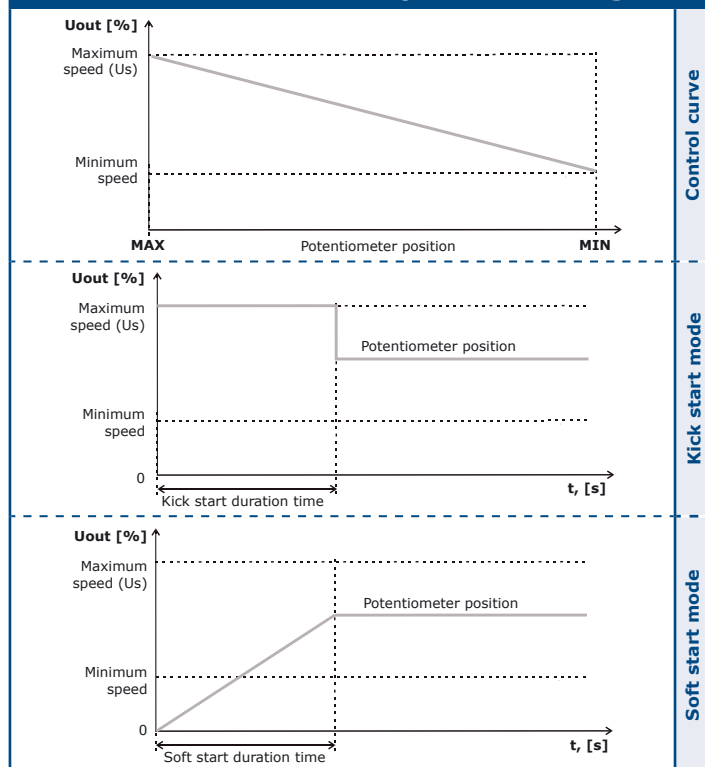
- Wide power supply range (110–240 VAC - 50 / 60 Hz)
- Automatic supply voltage detection
- Adjustable stepless output voltage
- Minimum speed adjustable by internal trimmer
- Kick start or soft start
- Illuminated on/off switch

### Technical specifications

Power supply, Us	110–240 VAC - 50 / 60 Hz	
Regulated output	Umin—Us	
Maximum load	depends on the version	
Unregulated output	Imax. 2 A	
Minimum output voltage, MIN	30–60 % Us	
Maximum output voltage, MAX	70–100 % Us	
Kick start duration	8–10 s	
Protection standard	IP54 (according to EN 60529)	
Ambient conditions	Temperature	-20–35 °C
	Rel. humidity	5–95 % rH (non-condensing)



### Operational diagrams



### Article codes

	Rated max. current, [A]	Fuse (5*20 mm), [A]
<b>ITR-9-15-DT</b>	1,5	F 3,15 A H 250 VAC
<b>ITR-9-30-DT</b>	3,0	F 5,0 A H 250 VAC
<b>ITR-9-50-DT</b>	5,0	F 8,0 A H 250 VAC
<b>ITR-9-60-DT</b>	6,0	(6,3*32) F 10,0 A H 250 VAC
<b>ITR-9100-DT</b>	10,0	(6,3*32) F 16,0 A H 250 VAC

### Area of use

- Fan speed control of voltage controllable motors in ventilation systems
- For indoor use only

### Standards

- Low Voltage Directive 2014/35/EC
- EMC Directive 2014/30/EC: EN 61326
- WEEE Directive 2012/19/EU
- RoHS Directive 2011/65/EU



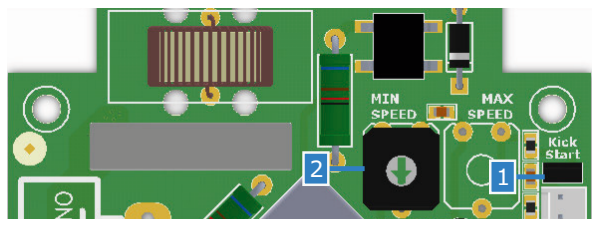
# ITR

## Electronic digital fan speed controller

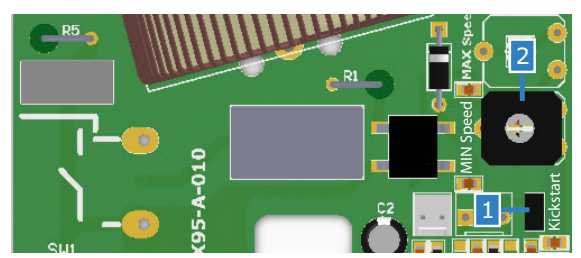


### Settings

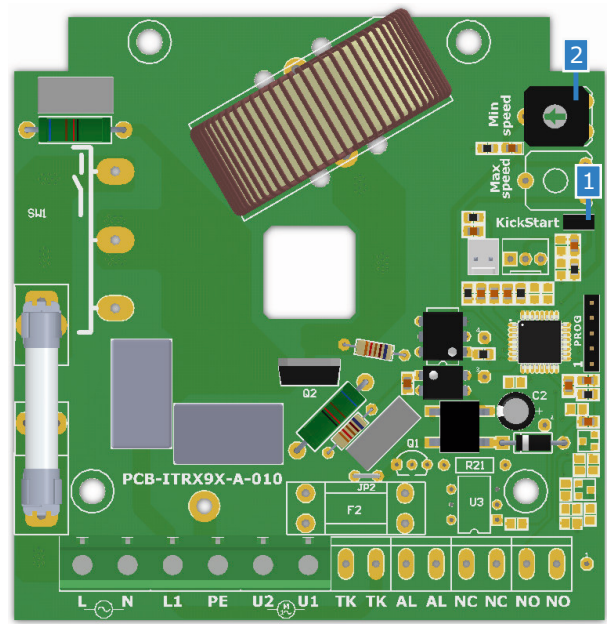
ITR-0-15-DT, ITR-0-30-DT



ITR-0-50-DT



ITR-0-60-DT, ITR-0100-DT



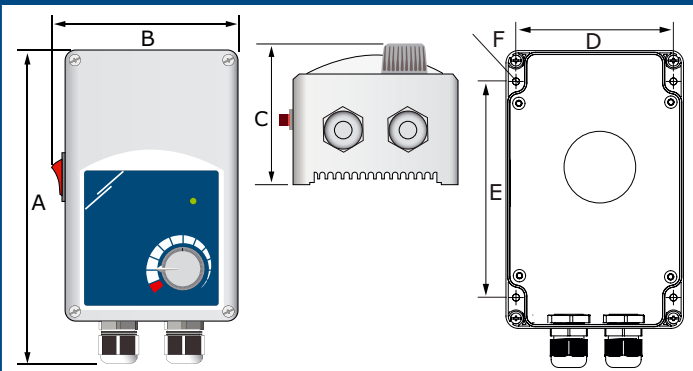
1 - Kick start selection jumper		Kick start is enabled
		Soft start is enabled
2 - Minimum speed trimmer		Adjusts the min. speed (factory preset - 45 % Us)

\* indicates closed position of the jumper.

### Wiring and connections

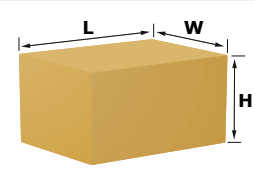
L	Power supply, 110–240 - 50 / 60 Hz	
N	Neutral	
L1	Unregulated output, I <sub>max</sub> . 2 A	
PE	Earth terminal	
U1, U2	Regulated output to motor	
Connections	Cable cross section	max. 2,5 mm <sup>2</sup>
	Cable gland clamping range	5–10 mm

### Fixing and dimensions



Article code	A	B	C	D	E	F
ITR-9-15-DT ITR-9-30-DT	162 mm	96 mm	75 mm	71 mm	108,8 mm	Ø 4,2
ITR-9-50-DT	162 mm	96 mm	93 mm	71 mm	108,8 mm	Ø 4,2
ITR-9-60-DT ITR-9100-DT	205 mm	124 mm	97 mm	102 mm	140 mm	Ø 4,6

### Packaging



Article code	Packaging	Length [mm]	Width [mm]	Height [mm]	Net weight	Gross weight
ITR-9-15-DT	Unit (1 pc.)	175	96	95	0,36 kg	0,42 kg
	Box (50 pcs.)	590	380	500	17,86 kg	22,10 kg
ITR-9-30-DT	Unit (1 pc.)	175	96	95	0,42 kg	0,46 kg
	Box (50 pcs.)	590	380	500	20,76 kg	24,10 kg
ITR-9-50-DT	Unit (1 pc.)	175	96	95	0,56 kg	0,62 kg
	Box (50 pcs.)	590	380	500	28,07 kg	32,10 kg
ITR-9-60-DT	Unit (1 pc.)	210	130	110	0,83 kg	0,92 kg
	Box (15 pcs.)	540	405	245	12,42 kg	14,64 kg
ITR-9100-DT	Unit (1 pc.)	210	130	110	0,95 kg	1,04 kg
	Box (15 pcs.)	540	405	245	14,25 kg	16,44 kg